



**Top Thicknesses**

- 10cm (4")

- 1.2cm (1/2")

**Depth**

- 50.5cm (19-7/8")

Fenix is a new extremely durable material that has an opaque appearance. It is highly resistant to scratches, heat, abrasions and is non-porous making it great countertop selection.

**Countertop lengths are custom - refer to min/max sizing below**

**Countertops with Integrated Basins**

Min "L"  
70 cm (27-1/2")

Max "L"  
270 cm (106-1/4")

**Countertops for use with Vessel Basins**

Min "L"  
70 cm (27-1/2")

Max "L"  
270 cm (106-1/4")

*\*holes can be drilled for vessel installations,  
contact us for more information*

## Finishes



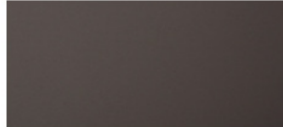
**BIANCO MALÈ - TFA**



**GRIGIO EFESO - TFB**



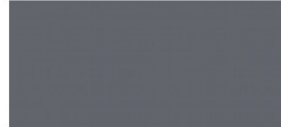
**CASTORO OTTAWA - TFC**



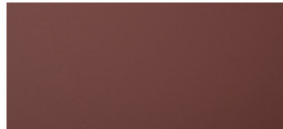
**CACAO ORINOCO - TFF**



**GRIGIO LONDRA - TFD**



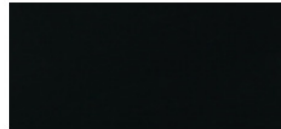
**GRIGIO BROMO - TFE**



**ROSSO JAIPUR - TFH**



**VERDE COMODORO - TFG**



**NERO INGO - TFJ**

## Basin Styles

**COVER basin style code: COVER50/60/70**



L 50 (19-5/8"), 60 (23-5/8"), 70 (27-1/2")  
min. tops: 70 / 80 / 90 cm  
W 31 cm (12-1/4")

**PRISMA basin style code: PRISMA50/60/70**



L 50 (19-5/8"), 60 (23-5/8"), 70 (27-1/2")  
min. tops: 70 / 80 / 90 cm  
W 31 cm (12-1/4")

**QUADRA basin style code: QUAD50/60**

*solid-surface basin affixed to the HPL top*



L 50 cm (19-5/8")- min top: 60 cm  
L 60 (23-5/8")- min top: 70 cm  
W 31 cm (12-1/4")

**OLY basin style code: OLY52/62**

*solid-surface basin affixed to the HPL top*



L 52 cm (20-1/2") min top- 60 cm-23-5/8"  
L 62 cm (24-3/8")min top- 70 cm-27-1/2"  
W 32 cm (12-5/8") all tops

*Oly and Quadra basins have overflow, Cover and Prisma have no overflow, 1, 2, 3 or no hole  
countertop depth is 50.5 cm (19-7/8")  
max top size is 270 cm (106-1/4")*