

# HPL (High Pressure Laminate)

## Countertops with basins



**Top Thicknesses**  
- 10cm (4")  
- 1.2cm (1/2")

**Depth**  
- 50.5cm (19-7/8")

HPL (high pressure laminate) is a water proof material that consists of multiple layers that are injected with thermosetting resins from there the material is heated at 150 degrees Celsius and simultaneously compressed to produce a waterproof sealed countertop finish.

**Countertop lengths are custom - refer to min/max sizing below**

### Countertops with Integrated Basins

Min "L"  
70 cm (27-1/2")

Max "L"  
270 cm (106-1/4")

### Countertops for use with Vessel Basins

Min "L"  
70 cm (27-1/2")

Max "L"  
270 cm (106-1/4")

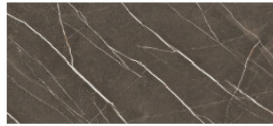
*\*holes can be drilled for vessel installations,  
contact us for more information*



**Finishes**



**PULPIS CHIARO - TKH**



**PULPIS SCURO - TKJ**



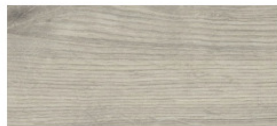
**ROVERE WAFER - TK2**



**ROVERE MONET - TK3**



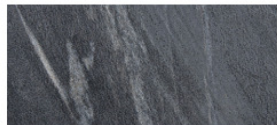
**ROVERE SLAVONIA - TK6**



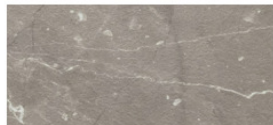
**QUERCIA GRIGIA - TK4**



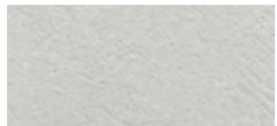
**NOCE SAVOIA - TKG**



**ARDESIA - TKF**



**BOTTICINO - TK1**



**MALTA GRIGIA - TKE**



**MALTA CANAPA - TKD**

**Basin Styles**

**COVER basin style code: COVER50/60/70**



L 50 (19-5/8"), 60 (23-5/8"), 70 (27-1/2")  
min. tops: 70 / 80 / 90 cm  
W 31 cm (12-1/4")

**PRISMA basin style code: PRISMA50/60/70**



L 50 (19-5/8"), 60 (23-5/8"), 70 (27-1/2")  
min. tops: 70 / 80 / 90 cm  
W 31 cm (12-1/4")

**QUADRA basin style code: QUAD50/60**

*solid-surface basin affixed to the HPL top*



L 50 cm (19-5/8")- min top: 60 cm  
L 60 (23-5/8")- min top: 70 cm  
W 31 cm (12-1/4")

**OLY basin style code: OLY52/62**

*solid-surface basin affixed to the HPL top*



L 52 cm (20-1/2") min top- 60 cm-23-5/8"  
L 62 cm (24-3/8") min top- 70 cm-27-1/2"  
W 32 cm (12-5/8") all tops

*Oly and Quadra basins have overflow, Cover and Prisma have no overflow, 1, 2, 3 or no hole countertop depth is 50.5 cm (19-7/8") max top size is 270 cm (106-1/4")*